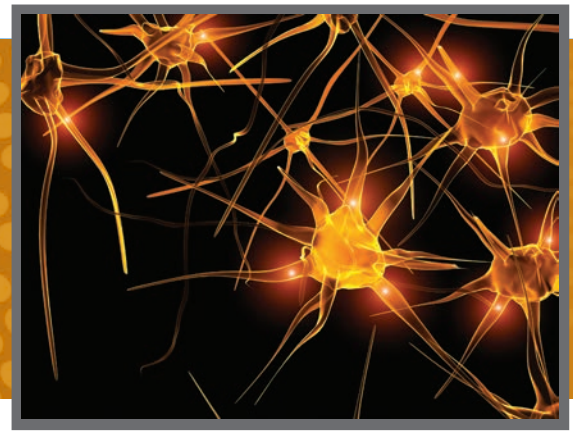




# SYNCHRONIZED VIDEO



Pinnacle's **SYNCHRONIZED VIDEO SYSTEM** can record up to four simultaneous experiments on one computer. Our Sirenia® software automatically synchronizes recorded video with EEG/EMG waveforms and biosensor activity to provide an accurate visual representation of animal activity and behavior. The synchronized video package is compatible with all Pinnacle hardware systems. Order it as an accessory to a new system, or easily integrate it into your current Pinnacle setup. It can also be used as a stand-alone video system.

## KEY FEATURES

**Synchronize Video** with data recordings

**Record** in color or grayscale

**Flexible** file size management

**Record** in low light or complete darkness

**Unrestricted** video playback

**Record** from any angle (Box/HD)

## COMMON USES



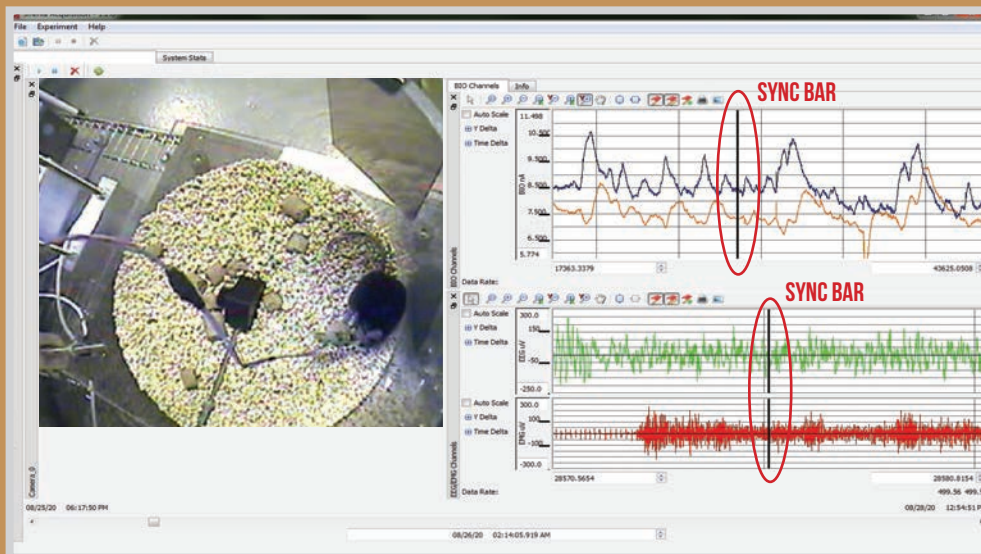
**CLASSIFY SEIZURE EVENTS**



**VERIFY SLEEP STATES**



**ANALYZE BEHAVIOR**



Captured video is displayed live on screen in conjunction with EEG, EMG, and/or biosensor data as it is streamed from the animal. In playback mode, video is synchronized with other recorded data, allowing EEG/EMG waveforms or biosensor activity to be analyzed along with an accurate visual representation of animal activity during data collection.

### ACQUIRE

Pinnacle's Sirenia® software uses frame-by-frame timestamping to synchronize video within 100 milliseconds to simultaneous EEG, EMG, or biosensor data.

### ANALYZE

The **Sync Bar** allows users to easily match the displayed video frame with corresponding data for accurate visual representation of animal activity.

### MANAGE

Extract segments from long recordings for simplified data transfer or archival. Plus, export video with associated data to AVI for playback during presentations.

## VIDEO SYSTEM

The video system consists of two components—a base computer package and a camera package. Together they provide everything you need to incorporate video capture into your research. The computer package includes a preconfigured computer, a high-definition monitor, a docking station for easy data transfer, a keyboard and mouse, and cables. Each camera package includes a camera, IR source, mounting accessories, and a Sirenia® video license key. Camera options are described below.

### 1 DOME CAMERA

Pinnacle's dome camera mounts above the cage. Its built-in infrared illumination adjusts to lighting conditions automatically, allowing video recording in reduced lighting and complete darkness.

### 2 BOX CAMERA

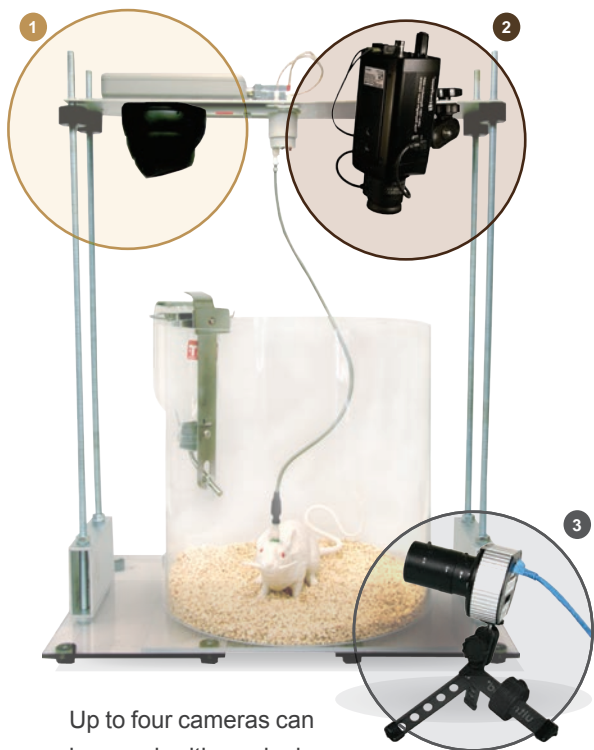
The box camera has improved optics and low-light performance compared to the dome camera, as well as flexibility in mounting options. It can be mounted above the cage using Pinnacle's standard mounting plate, on the cage stand, or to a tripod for recording at lower angles. A separate, automatic infrared illumination source allows video capture in conditions of low light and complete darkness.

### 3 HD CAMERA

The high definition (HD) Internet protocol (IP) camera includes all the features of the box camera with the added capability of recording at six times the resolution. The camera uses a single cable for power and data transfer.

FEATURES	DOMES	BOX	HIGH DEFINITION
Lens	3.6 mm (internal)	4 mm (external)*	2.8 - 12 mm variable (external)*
Max Resolution	640 x 480 pixels	640 x 480 pixels	1920 x 1072 pixels
Max Frame Rate	30 fps	30 fps	30 fps
Mount	Above	Above, Side, Tripod	Above, Side, Tripod
IR Source	Integrated	Independent	Independent
Color/Grayscale	Both	Both	Both
Interface	Analog	Analog	Digital Ethernet

\* Accepts standard C-mount lens



Up to four cameras can be used with a single video system.

## PRECONFIGURED COMPUTER

Pinnacle's synchronized video system is preloaded with Sirenia® Acquisition software, making installation fast and easy. The software automatically synchronizes video with other recorded data. Adjustable settings allow users to maximize storage space. In addition, video and data can be consolidated into smaller, targeted segments and exported together as an AVI file to be viewed on any computer.



Assembles in Minutes!

### COMPUTER SPECS\*

- 4-Channel Video Capture Card
  - 8 GB RAM
  - 4 TB Total Disk Space
  - AMD FX-6300 @ 3.3 GHz CPU (6 core)
  - Windows 7 Pro Operating System (64 bit)
- \* The system will meet or exceed these specifications.

## TRIPOD

An optional tripod can be used with the high definition and box cameras to enable recording at lower angles. Its non-slip vinyl feet make it ideal for any surface.

